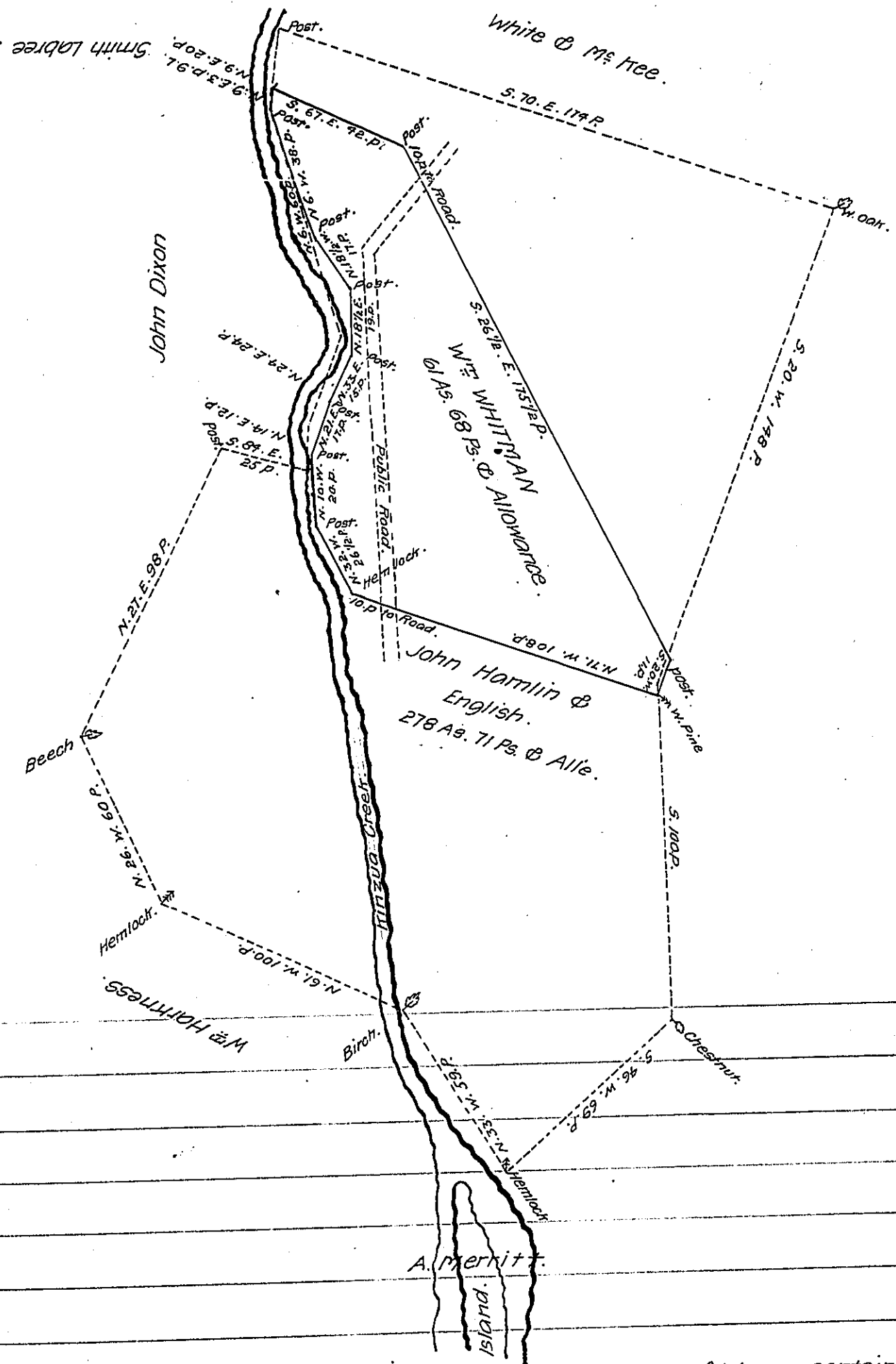


FORM NO 1.



A draft of a tract of land situated in the township of Hinzua and county of Warren contain-  
 ing 61 acres 68 perches and allowance of six per cent for roads etc. Surveyed for Wm  
 Whitman the 1st day of April, A. D. 1881, it being a part of a larger tract of 278 acres 71 perches and  
 allowance originally surveyed in pursuance of a warrant granted to John Hamlin &  
 English dated the 4th day of October 1825.

To Aaron K. Duntel Secy of Int'l Affs. D.F.A. Wheelock C.S.  
 Harrisburg Penn. \* Say Actual settlement and improvement.

IN TESTIMONY that the above is a copy of the original remaining on file in  
 the Department of Internal Affairs of Pennsylvania, made  
 conformably to an Act of Assembly approved the 16th day of  
 February, 1833, I have hereunto set my Hand and caused  
 the Seal of said Department to be affixed at Harrisburg,  
 this eighth day of August 1907.

*Henry Howell*  
 Secretary of Internal Affairs.